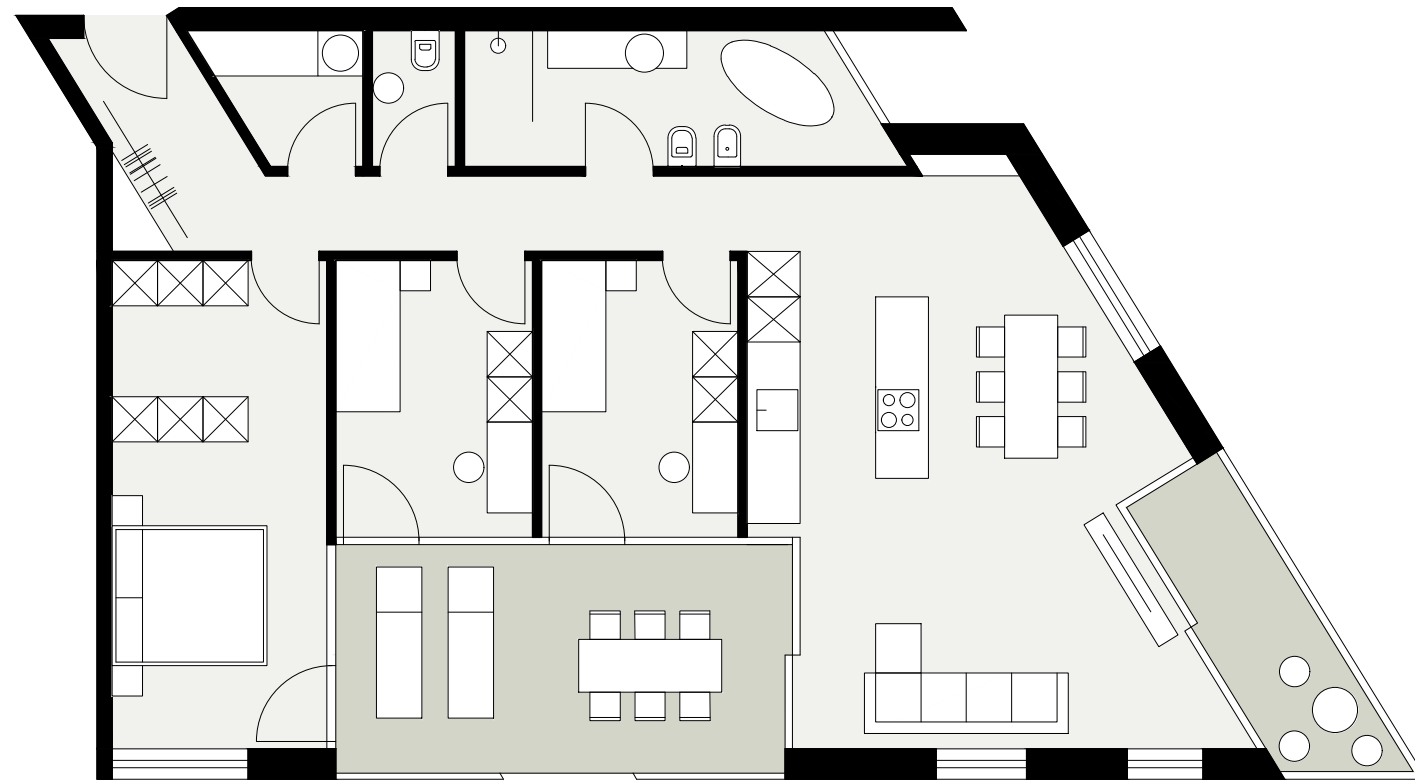
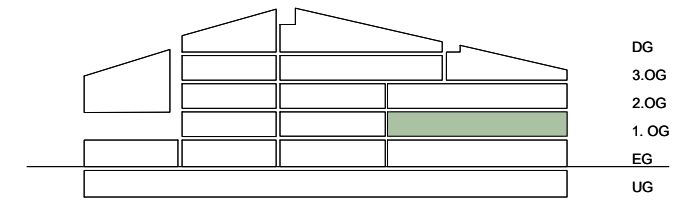
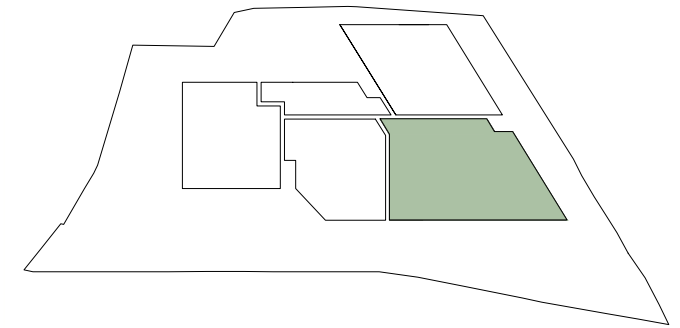
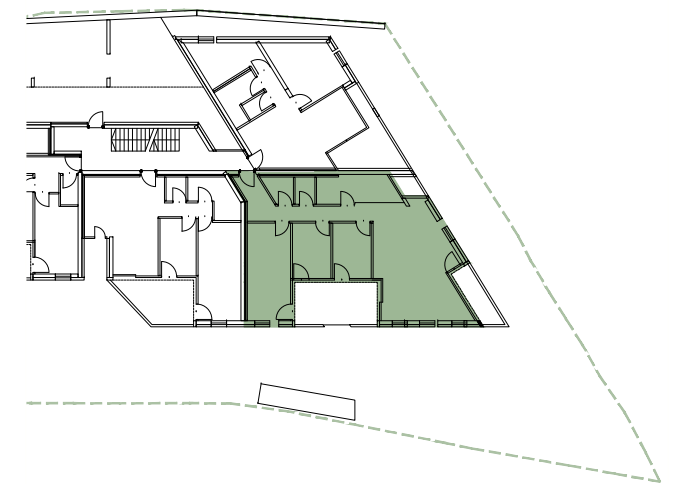


castani

Kortsch



| | |
|--------------|--------------------|
| Bruttofläche | 123 m ² |
| Nettofläche | 103 m ² |
| Loggien | 23 m ² |
| Keller | 10 m ² |



4-Zimmerwohnung mit Loggias
Sonne und Talblick
1. Obergeschoss
Wohnung C2

0 1M 5M

